



INTERIOR DESIGN

INTRODUCTION

Today's built environment presents subtle and complex challenges to design professionals. Designers can no longer view projects in terms of single-dimensional outcomes.

Design is an evolutionary process that strives to create beyond our best imaginations and we at CLOUDS aim to create such built environments.

Design shapes what we desire and how we live it, driving the demands for resources and energy.

As designers, we have an obligation to respond to these requirements and redirect our thinking and practices to produce buildings that are friendly to people and to our environment.





Design & Build

Our team works hard to make sure that all scale projects as well as interior design modifications run smoothly and fit our client's requests. We consistently achieve quality solutions because of our attention to detail and technological innovative ideas. We also strive for complete design collaboration with our clients .

We provide professional space planning, interior architecture and interior design services to a vast range of clients .As a full -service design and build company, our clients are assured that all stages of projects are done with complete attention to detail

Form and function matter for interior design project executions. All the way from project management to concept to handover , every team member adopts the comprehensive approach of attention to detail and customer need satisfaction towards implementation.

We invite you to stop by our offices to either discuss a particular interior design idea in mind or if you want us to develop a concept for you

Our Principles

Our principles are targeted for world class quality products. We aim to achieve products that are innovative . We deliver results in achieving grand concepts that are of high quality. We constantly strive to improve our technology to match world standards . Our design features include everything from affordable art that you can wrap around your favourite book shelf to magnificent display of your home or office with sculpture cut finishes

Mission

We pledge to satisfy our customers by providing the latest in quality products and best of customer services, and to achieve our objective of being the preferred supplier of our products and services by constantly endeavoring to enhance, improve and upgrade our range of products and services, to achieve and retain market leadership

Vision

Our vision is to help corporate houses in creating happier, healthier and more efficient work space : by providing sustainable , functional and aesthetic interior solution

Our Team

Our staff consists of a group of extremely motivated designer and technicians who strives to deliver clients the best of product and services

Our journey from a small business with big dreams to pioneer in our field in the region has been a prosperous one .We continue our journey into the future where we strive to grow bigger, and to have more happy and satisfied clients



Clouds Interior Products

- Fire rated & acoustic dry walls
- Fire rated acoustic ceiling
- Gypsum ceiling
- Metal ceiling
- Acoustic wood ceiling & Panels
- Acoustic fabric panels
- Acoustic metal ceiling
- Carpet tiles
- Raised floors
- Parquet floors

We manufacture office partitions systems using only the best quality,cushions,fabric,steel frames and bases etc.Further more , we also offer office partitions requirements.

For more information you can browse through our catalogue for our offerings, or stop by our offices to discuss about our services, product and benefits.

Our values:

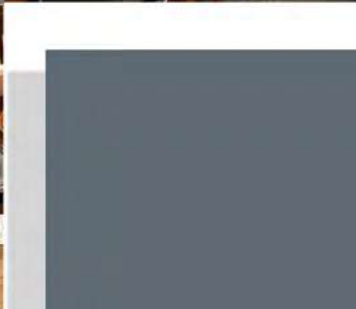
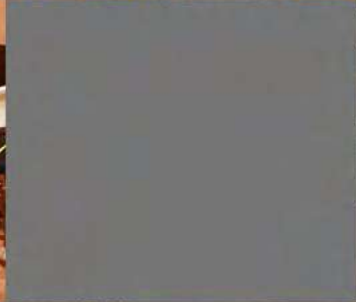
- Trust and personal responsibility in all dealings
- Work relentlessly towards every client's success
- Match words with action,always

Quality Control

It is our commitment to provide the best quality products and services to customers. Perfection is our goal. We have a high standard quality control department to improve our products



HARMONIOUS INTERIORS







Carpenters play a critical role in the construction industry in all three sectors (residential, commercial and industrial). Carpenters crib basements; frame walls; install floor joints; build roof systems; install doors, windows and finishing details; and build concrete forms, - scaffolding, trestles, tunnels, shelters and towers.

To create that aesthetically stunning finished touch, your designs could be either spray - painted, stained using colour matching techniques, varnished, hand painted, or button - polished, but this list is not exhaustive.

Joinery will always use their knowledge and experience to ensure that your product meets the highest requirements with regards to quality, appearance and practicality.

CLOUDS can produce:

- Internal/ External doors
- Wardrobe
- Counters
- Double / single glazed windows
- Tables
- French doors



clouds will offer advice and guidance on the wide choice of styles and materials available to his clients. This may include materials - such as oak, ash, beech, mahogany and join-ery grade pine. All our wood is sourced from local suppliers and comes from a sustainable source



Clouds joinery offer tremendous potential for creating spaces of great beauty. Our aim is to bring an imaginative approach to the design challenges presented to us by your project. This combined with a real enthusiasm, in depth knowledge and a high level of craftsmanship have ensured that The Green Oak Carpentry Company is pre-eminent in its field.



A joiner is an artisan who builds things by joining pieces of wood, particularly lighter and more ornamental work than that done by a carpenter, including furniture and the "fittings" of a house, ship, etc.[1] Joiners may work in a workshop, because the formation of various joints is made easier by the use of non-portable, powered machinery, or on job site. A joiner usually produces items such as interior and exterior doors, windows, stairs, tables, bookshelves, cabinets, furniture, etc. In ship-building a marine joiner may work with materials other than wood such as linoleum, fiberglass, hardware, and gaskets.

Commercial Office Window Blinds

Our extensive range of stylish top quality window office blinds are sure to suit privacy or security requirements in your office. Additionally we also offer free maintenance and easy to operate system

We also supply and install all kind of blinds namely ,venetian, roller by industry leaders like Euro systems, silent Gills, Hunter Douglas, Faber, Turnils and Louvolite

Our installation have been undertaken by offices across the country. Our team would be pleased to discuss any and all of your queries.

Quality Assurance

Our company has existing system that ensure both products and site installations meet top quality standards.

Additionally, we have process control through out the various stages of any project we undertake .Right from you placing your order to the final site quality inspection, we make sure our customers are absolutely satisfied.

Also note that our products come with manufacturer's warranty. Additionally, we also guarantee quality service for the site installation for all projects

Service Assurance

We promise to satisfy our customers by providing quality products supported by competent motivated customer service.

To achieve this objective, we continue to update our abilities and knowledge and strive to better our response to the markets we serve .We adhere to all technical and safety -specifications of our manufacture, clients and regulatory authorities .We are constantly striving to be one step ahead using the latest standards, attending seminars searching for new technologies and recourses to deliver the best possible solution for our customer needs.



QUALITY
DOESN'T COST MORE



JOINERY & GYPSUM

Clouds

Gypsum is a natural resource, a mineral rock, embedded in the ground. It has been widely used in construction for over 1000 years and has proved to be not only durable but also easy and safe to use. Ancient Egyptians used gypsum to build the pyramid of Cheops and the material was also used as arabesque decoration-stucco in Alhambra. Gypsum is an inherently sustainable material as it can be completely recycled an infinite number of times. Removing water from gypsum rocks through dehydration produces a plaster powder scientifically known as calcium sulphate. This process is totally reversible: adding water reproduces gypsum



We have been working in the plaster and plasterboards fields for years and are committed to maintain a strong position thanks to our innovative and sustainable products and services. Sustainability is a core value for Gyproc and we follow this long-term vision to deliver benefits for people and their environment

Gyproc's plasterboard product range provides solutions for enhanced moisture, fire, acoustic, impact and thermal performance. Gyproc plasterboards can be supplied in bespoke lengths, reducing waste and board cutting on site and contributing to improved environmental performance



Gyproc Plaster Board Fire Resistant board

Gypsum is approximately 21 percent by weight chemically combined water which greatly contributes to its effectiveness as a fire resistive barrier. When gypsum drywall is exposed to fire, the water is slowly released as steam, effectively retarding heat transmission.

Fire rated gypsum drywall is more fire resistant because it contains glass fiber reinforcement and other additives within its specially formulated gypsum core to help it hold up longer to a fire exposure.

Fire rated drywall is referred to as “Type X” and must be third-party certified by an independent testing and listing agency such as UL (Underwriters Laboratories Inc.) and ULC (Underwriters’ Laboratories of Canada) to meet the fire performance requirements prescribed in the ASTM C1396 (CAN/CSA-A82.27) Standard Specification for Gypsum Board. Type X fire rated gypsum drywall that is 5/8 -inch (15.9mm) thick and installed on each side of nominal 2-inch x 4-inch (38x89mm) wood studs spaced 16-inch (400mm) o.c. or 3-5/8 inch (610 mm) steel studs spaced 24” o.c. has a minimum fire rating for the assembly of 1 hour, which is a typical requirement for many building codes.



Gyproc Plaster Board Regular board

Gyproc Regular plasterboard consists of an aerated gypsum core encased in, and firmly bonded to, strong paperliners. Gyproc Regular plasterboard is suitable for drylining internal surfaces

Application

- Suitable for most system applications where normal fire, structural and acoustic levels are specified.
- Can be finished using Gyproc Fibre Tape or Gyproc Paper Tape and Gyproc Jointing Compound. Suitable for direct decoration.
- British Standard BS 1230 – Type 1
- European Standard EN 520 – Type A
- American Standard ASTM C1396 – Section 5

Mada Regular Plasterboard

Mada Plasterboards are produced from high purity natural gypsum core being sheeted in closely adhering paper liners. Mada Plasterboards are produced in compliance to ASTM C1396 & EN 520 standards. Mada Plasterboards are tested and certified by leading third party laboratories. Mada Plasterboards are produced in wide variety of length, width, thickness & edge types to cover the entire spectrum of the requirement.

Mada Regular Plasterboard is an imperative component of the light weight dry-wall partitions where standard level of fire, acoustics and structural properties are desired.



Gyproc Plaster Board Fire Resistant board



Gypsum is approximately 21 percent by weight chemically combined water which greatly contributes to its effectiveness as a fire resistive barrier. When gypsum drywall is exposed to fire, the water is slowly released as steam, effectively retarding heat transmission.

Fire rated gypsum drywall is more fire resistant because it contains glass fiber reinforcement and other additives within its specially formulated gypsum core to help it hold up longer to a fire exposure.

Fire rated drywall is referred to as

“Type X” and must be third-party certified by an independent testing and listing agency such as UL (Underwriters Laboratories Inc.) and ULC (Underwriters’ Laboratories of Canada) to meet the fire performance requirements prescribed in the ASTM C1396 (CAN/CSA-A82.27) Standard Specification for Gypsum Board.

Type X fire rated gypsum drywall that is 5/8 -inch (15.9mm) thick and installed on each side of nominal 2-inch x 4-inch (38x89mm) wood studs spaced 16-inch (400mm) o.c. or 3-5/8 inch (610 mm) steel studs spaced 24” o.c. has a minimum fire rating for the assembly of 1 hour, which is a typical requirement for many building codes.



Gyproc Plaster Board Fire Resistant board

Type C fire rated drywall (sometimes referred to as Improved Type X) is similar in composition to Type X, except that it has more glass fiber reinforcement and other ingredients in the gypsum core that makes its fire resistive properties superior to Type X. Type C gypsum board is available in 1/2-inch (12.7 mm) and 5/8-inch (15.9mm) thicknesses.

Fire rated Type X Shaftliner is 1" (25.4 mm) thick and used in special Shaftwall and Area Separation Firewall assemblies.

In residential homes, installation of fire rated drywall is often required by state/province and local building codes on interior and exterior walls near furnaces and utility rooms. Fire rated drywall can also be installed in a basement or other places where a wood stove might be used. Fire rated drywall is typically found on attached garage walls and ceilings that are adjacent to the main living area of the home.



For commercial buildings, fire rated gypsum drywall is specified for most of the building walls and ceilings to meet building code requirements for fire partitions and assemblies. These fire rated partitions and assemblies provide life safety for the buildings occupants



Gyproc Moisture Resistant Board



Gyproc Moisture Resistant consists of an aerated gypsum core with water repellent additives encased in, and firmly bonded to, strong moisture resistant paperliners that are green in color. Gyproc MR is a plasterboard that is suitable for drylining internal surfaces.

Gypsum plasterboard with water repellent additives in the core and paper liners. Gyproc Moisture Resistant consists of an aerated gypsum core with water repellent additives encased in, and firmly bonded strong paper liners. Gyproc Moisture Resistant is a plasterboard that is suitable for drylining internal surfaces.

Plasterboard linings provide good fire protection owing to the unique behaviour of the non-combustible gypsum core when subjected to high temperatures. For the purposes of the national Building Regulations, plasterboard is designated a material of limited combustibility' .



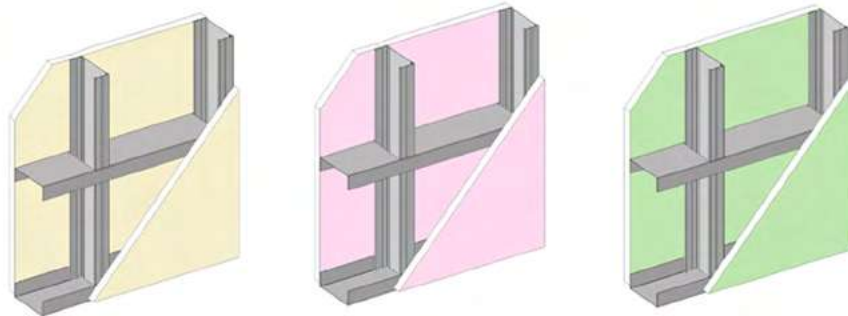
Gypsum plasterboard with water repellent additives in the core, encased in a special green liner paper. Suitable for intermittent moisture applications

Single Layer Partition System

CLOUDS Drywall Partition solutions are non load bearing, light weight, easy to install, yet robust –comprising of plasterboards screw fixed on either side to GI metal structures (Tracks and Studs), with joints taped and filled to get even smooth and homogenous surface.

- Low weight in comparison to masonry walls of comparable thickness
 - . Enhances saving in structural design
 - . Suitable for high rise buildings
- Quick and Easy to install ☒ Cost effective
 - . Reduced Project completion time
- Performance
 - . Fire protection – up to 1 hrs
 - . Sound Insulation – up to 51 dB
 - . Enhancement of fire & acoustic performance can be achieved by increasing the number of layers of plasterboards
 - . Filling the cavity with insulation enhances the acoustic performance

Used as Partitions in commercial and residential buildings.





Gypsum Plaster board

Based on the performance requirement, the plasterboard needs to be selected – RG for general applications; MR for humid and aerated area application; FW for enhanced fire resistance; TF for enhanced Impact resistance etc.

Tracks

Horizontal member of GI metal structure with equal 32mm minimum flange heights. In case of deflection the Top tracks have a flange height of minimum 50mm

Studs

Vertical member of GI metal structure with unequal flange heights(suitable for - boxing of studs)

Anchors/plugs

Used for fixing the tracks to the slabs and floor respectively

Drywall screws

Used for screw fixing the boards to the metal structures; available as self tapping or self drilling

Joint tape and Filler

Used to get a even smooth and homogenous surface at the joints

Sealant

Applied at the perimeter areas, to achieve the necessary fire and acoustic performance

Insulation

Used as cavity infill to enhance sound insulation

Fixing channel / Noggins

Used as backing for horizontal edge cut joints in fire rated partitions



GLASS

Glass offers you nearly limitless possibilities for the design of your rooms. It gives your partitions a high-quality appearance and creates bright, open spaces. With its sound-proofing properties it enables you to work undisturbed and in peace, which is an ideal condition for an office.

Frameless Glass Wall

Back to Glass Wall Frameless movable glass wall partitions add unmatched beauty and elegance to any room.

Glass wall with top and bottom low profile rails allow large sheets of glass panels to be conveniently moved to create flexible, light infused spaces

Glass decoration

Decorative films are perfect for privacy and decorative applications on glass and windows. The ideal solution to give a touch of elegance and originality to the glass surfaces of malls, shops, spa, offices, restaurants, & hotels,



Frameless glasswall panels

Are made from a sheet of glass attached to top and bottom aluminum horizontal rails. The panels are shipped fully assembled.

The term frameless is used due to the lack of a vertical frame member. The glass edges are polished for a smooth finish. There is a 1/4" - 1/2" [6-12mm] gap between panels to prevent the edges from touching.

The size of the gap varies due to glass tolerances.



Framed glass wall

Gives you the flexibility and variety to accommodate not just today's needs but also the continually changing needs of the future. A small private office today can evolve to a large conference room setting tomorrow, easily.

Installation is simple and quick with Privacy Wall. The panels arrive fully assembled and ready for installation no assembly reduces installation time by as much as 70%. Both the Privacy Wall and Glass Selections frames are 100% reusable, and are easily moved and changed to support your continually changing needs.



Framed glass wall

Put every space to work. Create the spaces you need from private offices and team areas to meeting rooms and public spaces. Privacy Wall can help you get the right combination of privacy and collaboration vital to high performance environments.





CARPET FLOORING

Carpet tile

or modular carpet – offers many advantages. It's easy to install and easy to clean. If you get a tough stain, just pop out the tile and clean it in a sink. Or, you can replace one tile – not the whole room. And carpet tile is engineered to be tough, that means a long performance life. Plus, it offers infinite design flexibility. In short, carpet tile could be the perfect fit for your installation.



Advantages of carpet tile

Today's modern office environments with open office systems are designed for flexibility to accommodate frequent layout changes. A modular floor can be quickly adapted to new requirements thereby reducing the cost of reorganisation. Where carpet tiles are installed, telephone, electrical and other under-floor systems remain easily accessible for these changes to be made.

- Colour co-ordinated for maximum design flexibility
- Increased speed of installation
- Installation wastage is reduced
- Damaged or soiled tiles can be replaced
- Wear rotation to extend flooring lifespan
- Renovation with minimal disruption
- Compatibility with access system



Inspiring Ideas for your Interiors



Coffe Time Building ,Main Street ,Al Wakra, Doha ,Qatar,ph: +97444360577
Fax: +97444356542, Email:info@cloudsinteriors.com